



Universidad Austral de Chile
Conocimiento y Naturaleza

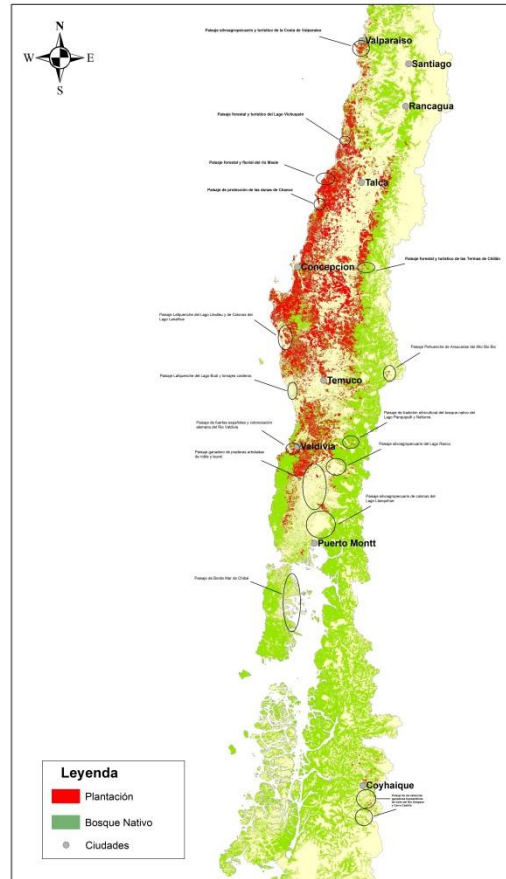


FOREST PLANTATION AND LANDSCAPE



Luis Otero

Distribution of forest plantation



Chile was deforested by forest fire from mid 19th to mid 20th century, 78% of the coastal range was eroded



About 10 million hectares of land were
destroyed by fire



Te plantations began in 20th century, but were actually promote since the 60s to 2010, by left and right governments, it was a state policy



2,7 million hectares were successfully planted and soil erosion was stopped



The economic result of this policy has been very positive. It was created a very strong forestry industry. The exportation were 7 billion dollars de las year and the sector employs about 300 thousand peoples.



But the plantations generated many environmental problems, specially with the ecosystem services, water consumption, large clear cuttings. Substitution of native forest and problems with the biodiversity



The local communities suffer the negative effects of plantations, bad labour conditions, the deterioration of the rural roads, a lot of dust in summer, water problems, lost of the traditional landscape ,etc
The forest sector was hero in the 70s today became public enemy of a part of society



In 2010 more than 2 million hectares were certified by FSC and the forestry sector changes strongly. The labour conditions are very different, the rights of the local communities are increasingly considered, the substitution of the native forest was stopped



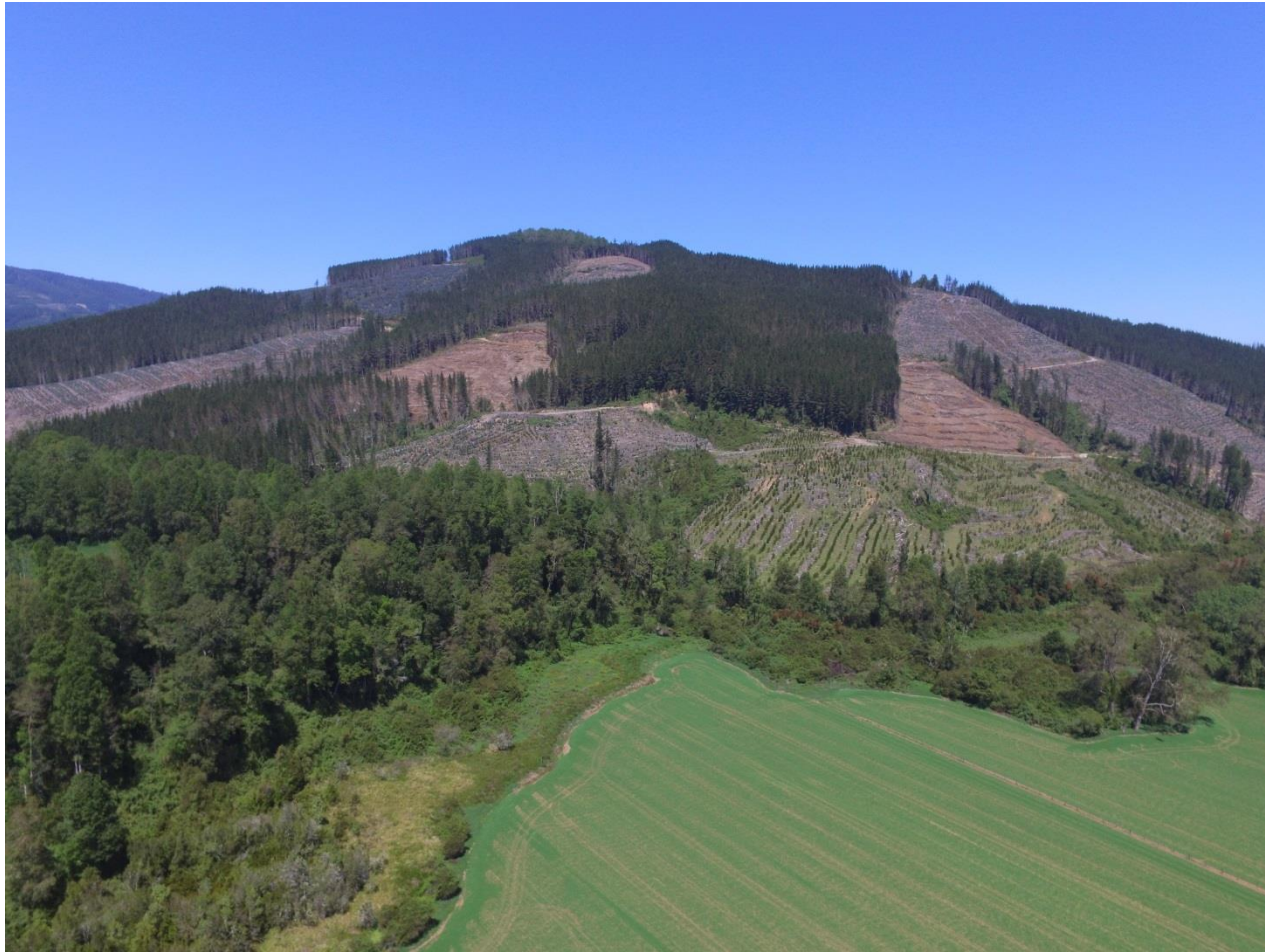
Despite of the changes , the public opinion of large part of the people continues against to the forestry sector



One of the most important problems are the landscape and the environmental services



It is possible to manage the landscape and to make clear cuttings in mosaic, in according to FSC Principle 6





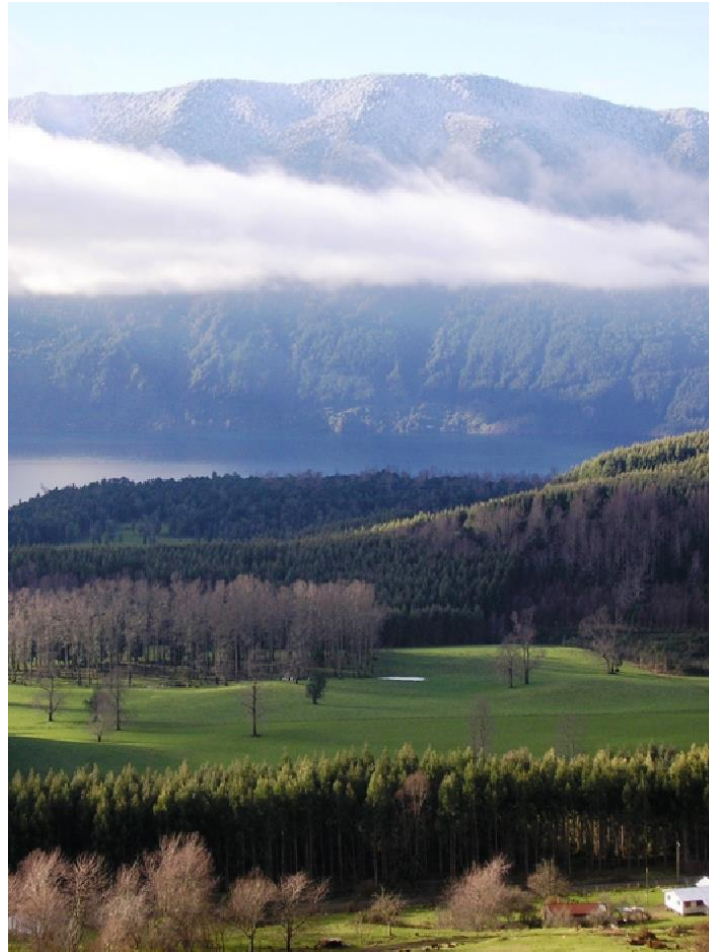
To make a mosaic in the landscape means smaller size of clear cuttings and better protection of the soil and water



The mosaic has positively effects on
scenic beauty



Also the mosaic of ecosystems has a positive effects on the biodiversity, becouse of we can create different habitats in the landscape



Criteria 6.8. The forestry owner must manage the landscape to create a variable mosaic of different species, ages, size and form .



It is our the goal...
Thank you for your attention

